






378 Woongarra Scenic Drive INNES PARK QLD

3  2  4 

This stunning home located at 378 Woongarra Scenic Drive in Innes Park, is a must-see for anyone looking for their dream home. Built in 2021 - this home presents 'AS NEW', with a spacious and elegant design, perfect for those seeking a peaceful and luxurious lifestyle.

The home has an airy open plan layout with the kitchen, dining and family room/living area flowing out to a big under roof outdoor entertaining space overlooking the nicely landscaped gardens. Additionally, there are 3 other outdoor living spaces ensuring the whole family can enjoy their own space.

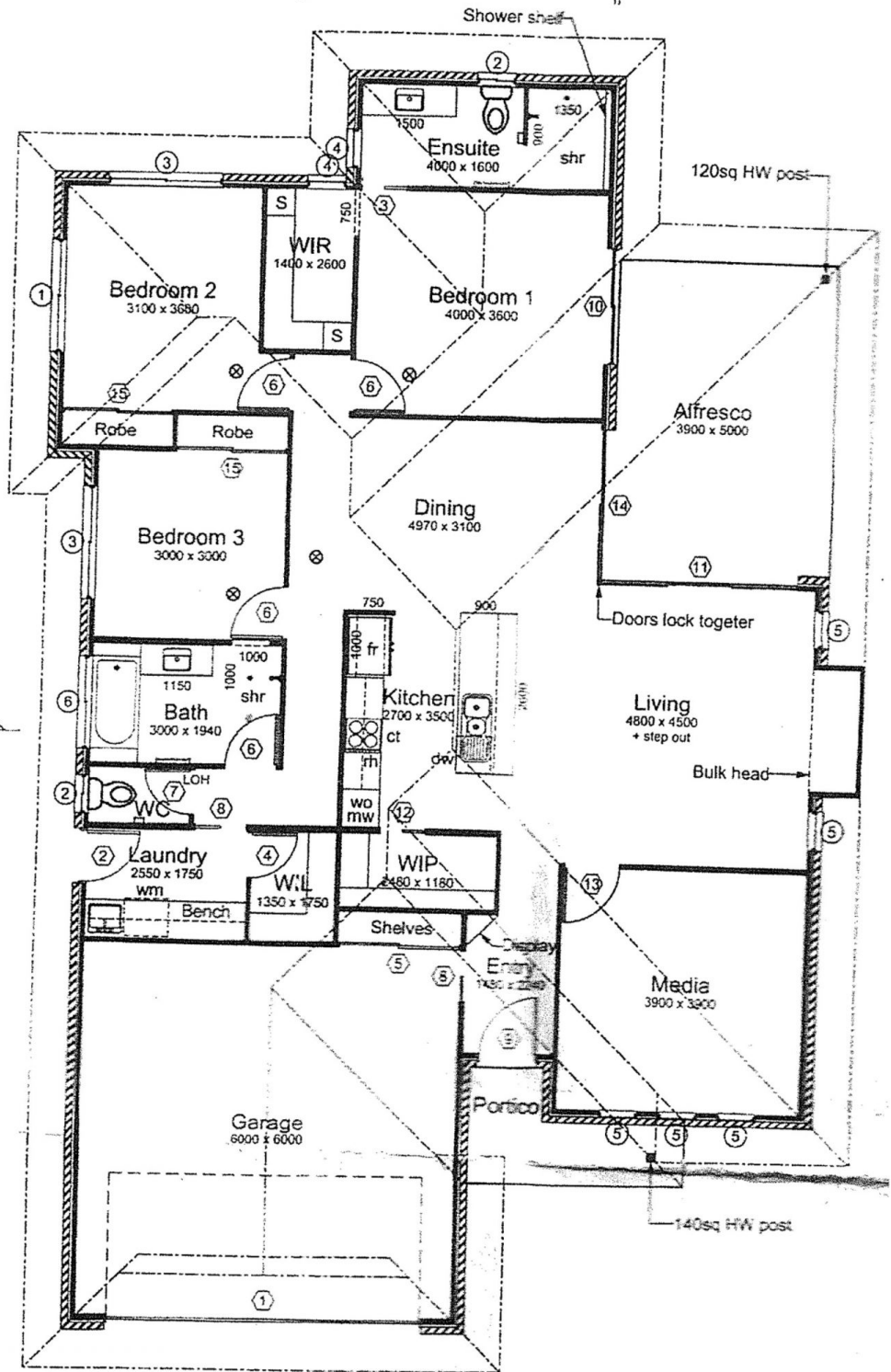
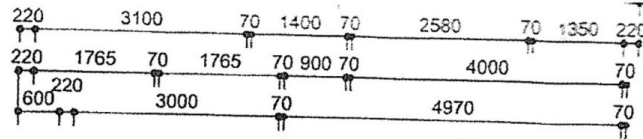
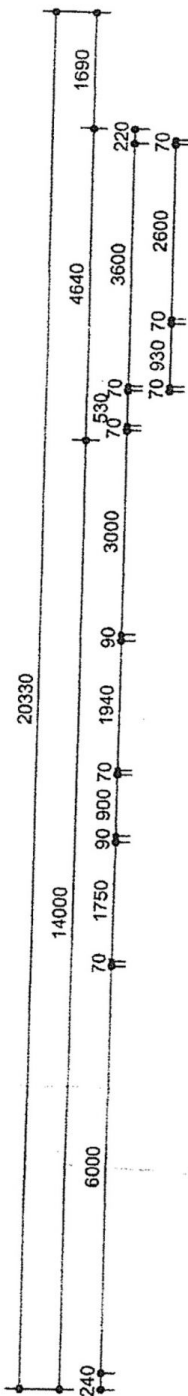
The air-conditioned media room is located at the front of the home and can be used as a huge 4th bedroom if desired. The main bathroom to service bedrooms 2 and 3 is complete with a separate shower and bath, while the

Price : Offers Above \$899,000
Land Size : 915 sqm
View : <https://www.thefourwalls.com.au/sale/qld/bundaberg-wide-bay/innes-park/residential/home/7943515>



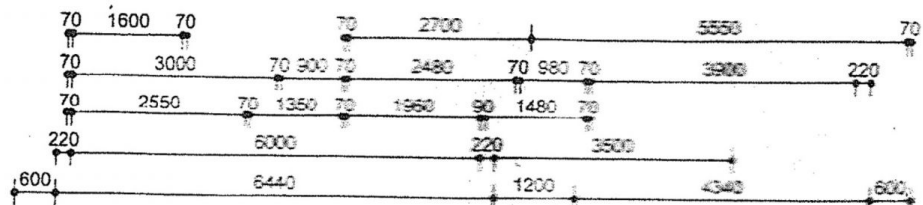
Amanda Filmer
07 4154 7788

Alifresco 18.18m²
TOTAL 214.81m²



LEGEND:

ct Cook Top
dw Dishwasher Space
fr Refrigerator Space
mw Microwave Oven Space
rh Range Hood
wm Washing Machine Space
wo Wall Oven



Door Schedule			
Height	Width	Description	Count
2250	5000	Panel Lift Door	1
2040	820	Entrance 1/2 Glass Door	1

Amendment